

#149

Map of
Section 36.
Tp. 7. N. Range 2. W.
Salt Lake Meridian

March 1-1898.

Scale 300ft. = 1 inch

Washington Jenkins,
Civil Engineer.

32 Lots.

State of Utah } ss.
County of Weber }

I do hereby certify that this plat correctly represents an accurate survey made by me of all of Section No. 36, in Township No. 7, North of Range No. 2, West of the Salt Lake Base and Meridian, for the parties interested therein, February 28, 1898.

Washington Jenkins
Surveyor.

State of Utah } ss.
County of Weber }

On this 14th day of March, A.D. 1898, personally appeared before me Washington Jenkins, who duly acknowledged to me that he signed the same.

Ernest E. Stevens,
Notary Public

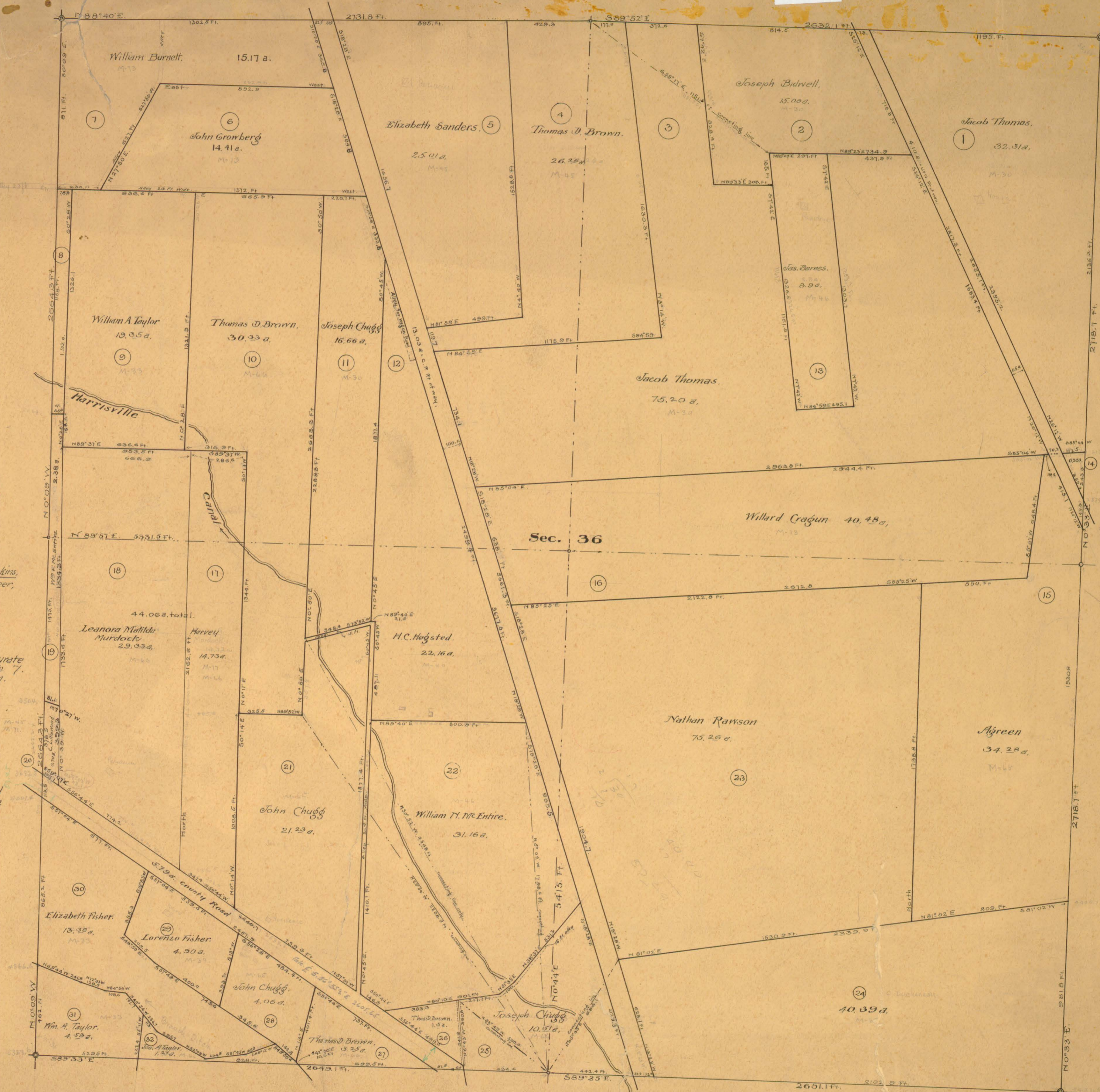
My Commission expires, Oct 16, 1901.

State of Utah } ss.
County of Weber }

I, John G. Tyler, County Recorder of Weber County, Utah, hereby certify that this is a true and correct copy of a plat filed in this office

County Recorder.

A copy of this plat, was approved by the State Land Board by letter to me dated April 11th 1898, W. Jenkins.



Computed area 600.75 acres.

A-2#5